

Rixson

27 3/4" Offset - Heavy-Duty Offset Hung Floor Closers



Application

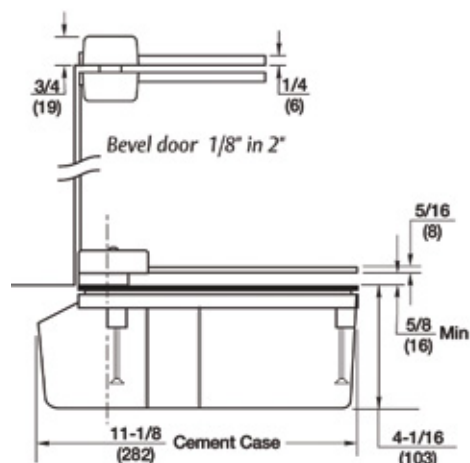
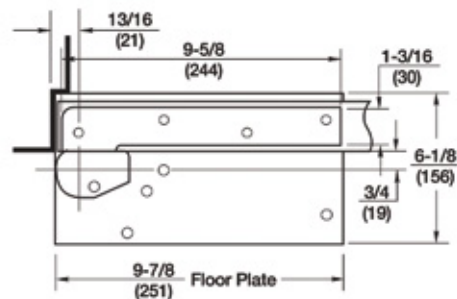
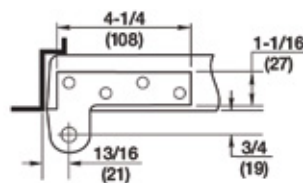
- Single Acting, Handed
- Exterior or Interior Doors
- Weight to 450 lbs.*
- Door Width up to 4'0" (1219mm)

Product Description & Features

- Built-in positive dead stop prevents door from swinging beyond the desired opening degree (specify 90°, 105°)
- Separate and independent valves for closing speed, latch speed and backcheck
- Available selective hold open (S) at same degree as dead stop
- Models available to meet ICC/ANSI 117.1 low opening force requirements, prefix "PH". (For 8-1/2 lbs. of opening force prefix PH and suffix 8-1/2 lbs.) Special Order.
- Available 1-1/2" offset, for doors with cladding or frames with applied molding, maximum door weight 250 lbs. Special Order.
- Cynolac, rustproof cement case
- Vertical door adjustment
- Standard top pivot: #180 included
- Intermediate pivot(s) required: M19 (order separately)
- Doors up to 90" (2286mm) in height should use one intermediate pivot. Each additional 30" (762mm) warrants another intermediate pivot
- Furnished with wood and machine screws

Technical Information

Frame stop required



Stocked Product

Part #	Opening	Option	Description
27	90	*S	RH Less all parts
27	90	*S	LH Less all parts
27	90	*S	RH 626 Finish complete
27	90	*S	LH 626 Finish complete
27	105	*S	RH 626 Finish complete
27	105	*S	LH 626 Finish complete

*Selected Hold Open - Suffix S. these closers can be set to hold open or non hold open.

Complete Closers include: closer body, top pivot (180) arm package, floor cover plate, and cement case

Rixson

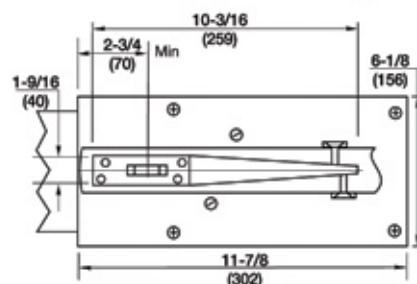
Model 28 - Heavy-Duty Single-Acting Center Hung Floor Closers

Application

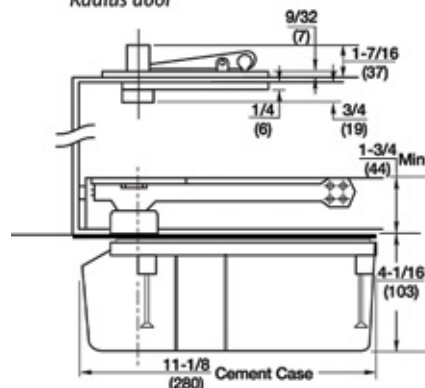
- Single Acting, Handed
- Exterior or Interior Doors
- Weight to 350 lbs.
- Centering Arm
- Sizes up to 4'0"x8'6"*
- (1219mmx2591mm)



Frame stop required at lock edge



Radius door



Product Description & Features

- Centering arm with adjustment screws in faces of door
- Built-in positive dead stop prevents door from swinging beyond the desired opening degree (90°)
- Separate and independent valves for closing speed, latch speed and backcheck
- Selective hold open (S) at same degree as dead stop
- Delayed action option – prefix "DA" (non-hold open closers only)
- Models available to meet ICC/ANSI A117.1 low opening force requirements, prefix "PH". (For 8-1/2 lbs. of opening force prefix "PH" and suffix "8-1/2 lbs.")
- Cold weather fluid option – specify "CWF" (not available for closers with "DA")
- Sealed closer option – specify "SC"
- Available with floor plate or threshold installation (floor plate shown)
- Cylolac, rustproof cement case
- Arm reinforcement bracket for wood doors – prefix "W"
- Standard top pivot: #340 included
- Not allowed for fire rated doors
- Frame stop required on the header at the lock side. If not supplied by frame manufacturer, recommend use of 60131
- Furnished with wood and machine screws
- Extended spindles available in 1/2" increments up to 2" longer than standard

Stocked Product

Part #	Description
28S LAP HD	90 FLR CLSR BODY RH
28S LAP HD	90 FLR CLSR BODY LH

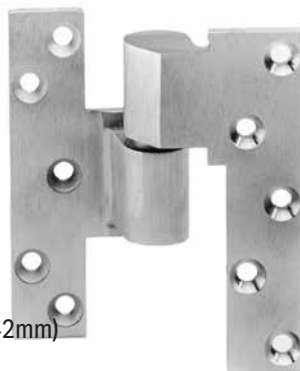
Rixson

Model M19 - Intermediate Pivots

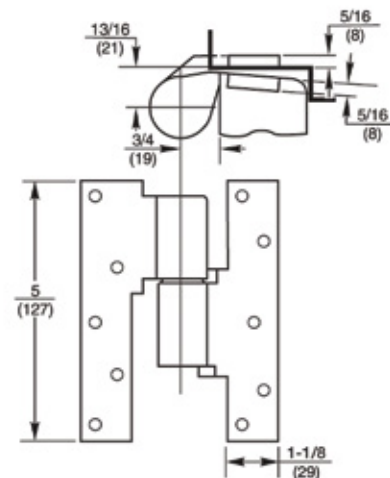
- Application
- Full Mortise
 - Handed

Product Description & Features

- M19, bushing, not load-bearing
- Maintains door alignment
- Aids in installing floor closers and bottom pivots
- Non-ferrous base material
- 3/4" offset standard
- On labeled for fire doors NFPA80 requires an intermedi. every additional 30" (762mm) of door height over 60" (1542mm)
- For 20-minute label suffix "-20" to the part number
- Furnished with wood and machine screws



Technical Information



Stocked Product

Part #	Description	Finish
M19	RH	626
M19	LH	626

Also available electrified:

Model E-M19 - 3/4" Offset Power Transfer Pivot - 4 Wire

- Application
- Offset Hung
 - Electric Pivot for Power Transfer
 - Handed

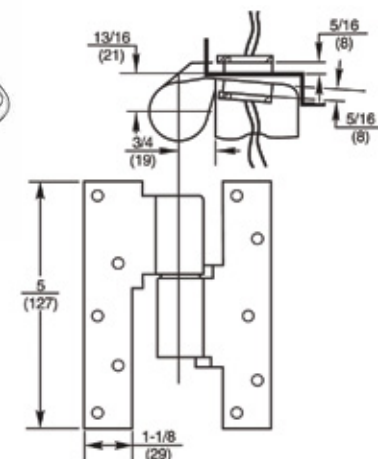
Product Description & Features

- Not load-bearing
- Door and jamb portion are factory assembled and cannot be separated
- Always use M19 intermediate pivot to install door
- Specify four, six, eight or twelve wires
- 24-gauge wire is rated at 2 amps for low voltage, class II wiring applications
- 3/4" (19mm) offset
- Available 1-1/2" offset Special Order.
- Furnished with wood and machine screws
- 4 wire



Whenever power transfer pivots are used, the leaves must not be separated

Technical Information



Stocked Product

Part #	Description	Finish
EM19	RH	626
EM19	LH	626

Hardwiring Made Easy™



Rixson

Model 117

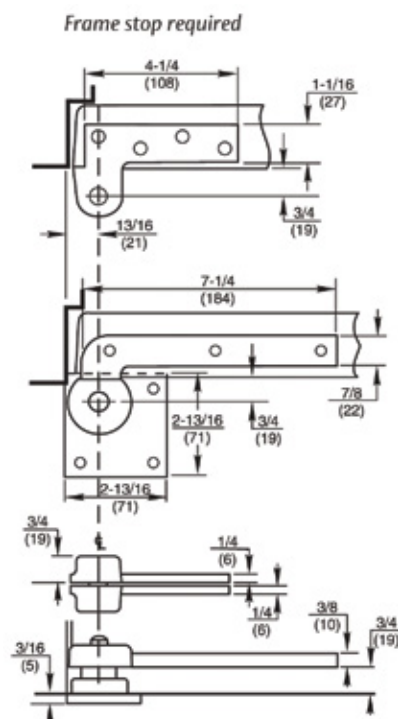
Application
 Interior Doors
 Weight to 300 lbs.*
 Door Width up to 3'6" (1067mm)
 Handed



Product Description & Features

- Standard top pivot 180 included
- 119 intermediate pivot recommended (order separately)
- Bottom pivot mortised into floor
- Available for fire door assemblies up to three hours – specify F117. Intermediate pivot required by UL. Specify FM19, (order separately)
- For 20-minute label suffix "-20" to the part number
- Non-ferrous base material
- Doors up to 90" (2286mm) in height should use one intermediate pivot. Each additional 30" (762mm) of door height warrants another intermediate pivot
- 3/4" (19mm) offset (measured from centerline of pivot to face of door)
- Available for 1-1/2" (38mm) offset (door weight 150lbs) for doors with cladding or frame molding.
- Door edges must be beveled 1/8" in 2"
- Furnished with wood and machine screws
- Extended spindles available in 1/2" (13mm) increments up to 2" (51mm) longer than standard
- Doors will swing 180°, trim permitting

Technical Information



Stocked Product

Part #	Description	Finish
117	RH	626
117	LH	626

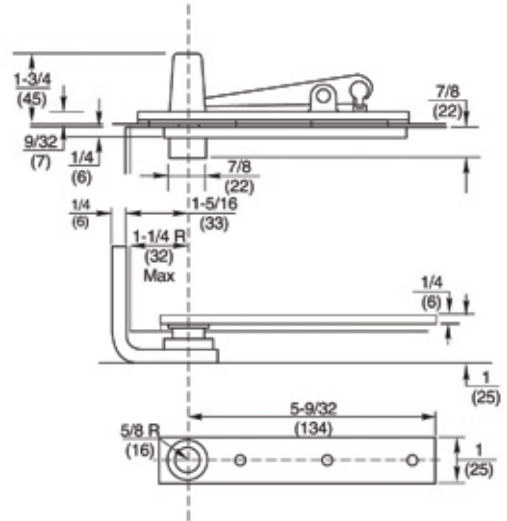
Rixson

Model 127-3/4 - Center Hung Pivot Set

Application
Interior Doors
Weight to 200 lbs.
Door Sizes up to 3'6" x 8'6"
Non-handed



Technical Information



Product Description & Features

- Standard top pivot 320 included
- Bottom pivot mortised into side jamb
- Weight of door borne by floor
- Pivot point centered in thickness of door
- Door must have radius on pivot edge
- Not allowed for use on labeled doors and frames
- Furnished with wood and machine screws

Stocked Product

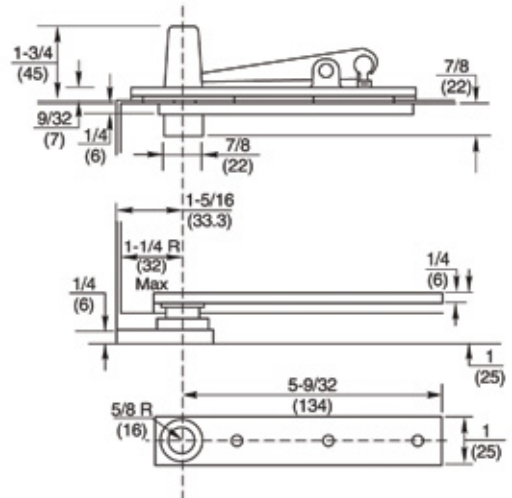
Part #	Finish
127	626

Model 128-3/4 - Center Hung Pivot Set

Application
Interior Doors
Weight to 250 lbs.
Door Sizes up to 3'6" x 8'6"
Non-handed



Technical Information



Product Description & Features

Identical to the 127-3/4 except:

- Bottom pivot mounts directly to floor

Stocked Product

Part #	Finish
128	626

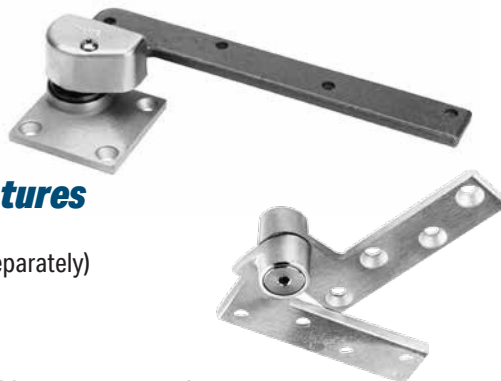
Rixson

Model 147 - Offset Hung Pivot Sets

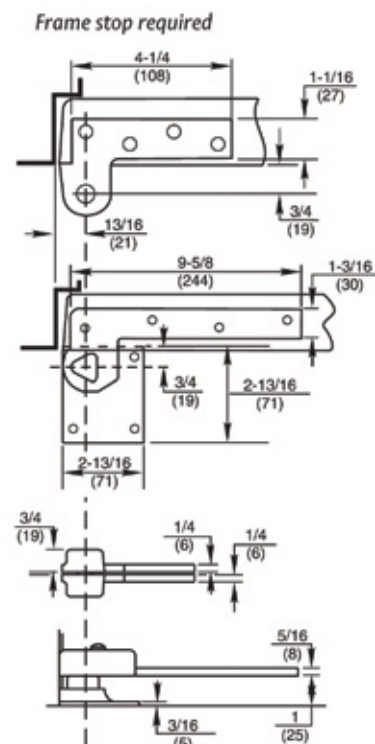
Application
 Exterior or Interior Doors
 Weight to 600 lbs.*
 Door Width up to 4'0" (1219mm)
 Handed

Product Description & Features

- Standard top pivot 180 included
- M19 intermediate pivot required (order separately)
- Bottom pivot mounts directly to floor
- Uses same arm and cap as 27 floor closer
- Non-ferrous base material
- Doors up to 90" (2286mm) in height should use one intermediate pivot. Each additional 30" (762mm) of door height warrants another intermediate pivot
- 3/4" (19mm) offset (measured from centerline of pivot to face of door)
- Door edges must be beveled 1/8" in 2"
- Furnished with wood and machine screws
- Doors will swing 180°, trim permitting



Technical Information



Stocked Product

Part #	Description	Finish
147	RH	626
147	LH	626

Model 180 - Offset Hung Top Pivots

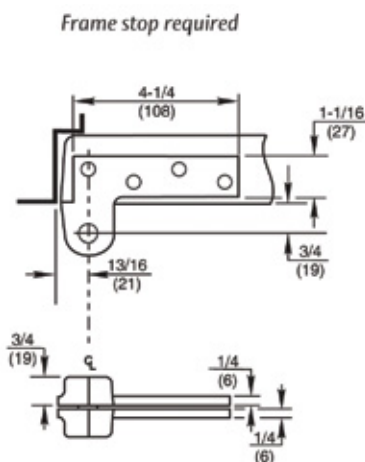
Application
 Full Mortise
 Non-handed



Product Description & Features

- Standard top pivot for most offset pivot sets and floor closers
- Oil-impregnated sintered bronze bushing
- Non-ferrous base material
- For 20-minute label suffix "-20" to the part number
- 3/4" (19mm) offset (measured from centerline of pivot to face of door)
- Furnished with wood and machine screws

Technical Information



Stocked Product

Part #	Finish
180	626

Rixson

Model 340 - Center Hung Top Pivots

Application
Fully Concealed
Non-handed



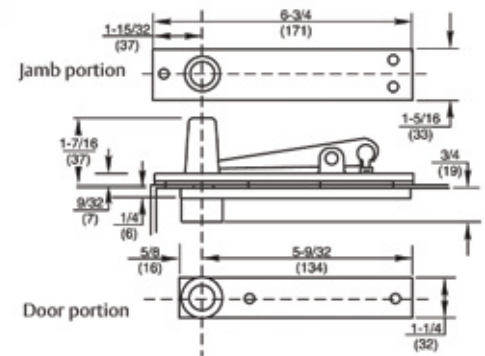
Product Description & Features

- Standard top pivot for Models 370 and 117-3/4 pivot sets. Also used for 28, 30, 40 and 50 Series floor closers
- Walking beam-type pivot – 1/2" (13mm) diameter pivot pin with 3/4" (19mm) engagement
- Oil-impregnated sintered bronze bushing
- Completely concealed when door is closed
- Furnished with wood and machine screws

Stocked Product

Part #	Finish
340	626

Technical Information



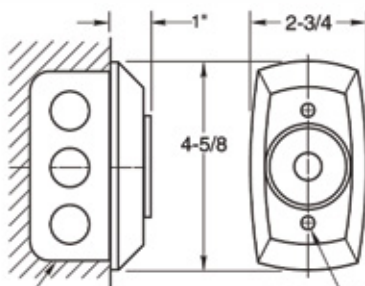
Rixson

Model 996 - Electromagnetic Door Holder

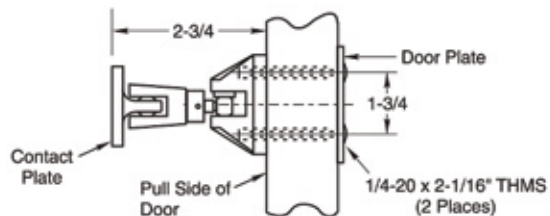
Application Wall
Mount Adjustable
Armature Concealed
Wiring
ANSI/C00011

Product Description & Features

- Total Projection: 3-3/4" (95mm)
- Adjustable armature rotation up and down back and forth for better alignment.
- Cannot be use with 900 base or spacers.
- Can be used without adjustment piece making it a model 997
- Mounting Requirements: 2" x 4" x 2-1/2" (51 x 102 x 64mm) outlet box
- Wall must be properly reinforced and outlet box adequately fastened

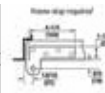


10-32 x 1-1/2" Flat Head Self-Tapping Screws (2 Places)



Technical Information

- Voltage and Current:
120VAC, 60Hz., .020 amp
24VAC/DC, 60Hz., .020 amp
12VDC, .040 amp
- For 50-55 lbs. of holding force, specify voltage
120VAC, 60Hz. .017 amp 24VAC, 60Hz. .080 amp
24VDC, .068amp 12VDC, .180amp



- 240VAC, 50/60Hz. .009 amp
- Shipping Weight: 2 lbs. (0.9 kg)

Stocked Product

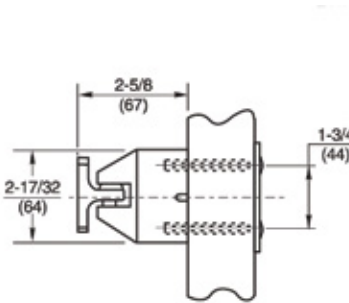
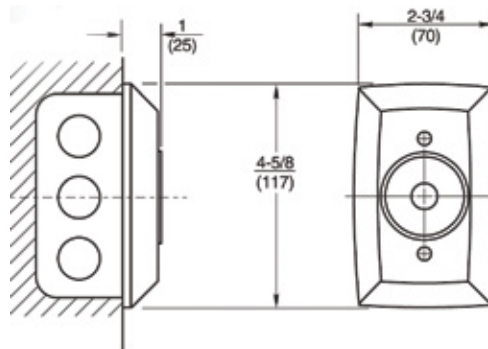
Part #	Finish
996	689

Model 998 - Electromagnetic Door Holder

Application
Wall Mount
Concealed Wiring
ANSI/C00011

Product Description & Features

- Total Projection: 3-5/8" (92mm)
- Mounting Requirements: 2" x 4" x 1-3/4" (51 x 102 x 45mm) outlet box
- Wall must be properly reinforced and outlet box adequately fastened



Technical Information

- Voltage and Current:
120VAC, 60Hz., .020 amp
24VAC/DC, 60Hz., .020 amp
12VDC, .040 amp
- For 50-55 lbs. of holding force, specify voltage
120VAC, 60Hz. .017 amp
24VAC, 60Hz. .080 amp
24VDC, .068amp
12VDC, .180amp
240VAC, 50/60Hz. .009 amp
- Shipping Weight: 2-1/2 lbs. (1.1 kg)



Stocked Product

Part #	Finish
998	689